



## Flat 5, 15-17 Middleton Road, Salisbury, Wiltshire, SP2 7AY

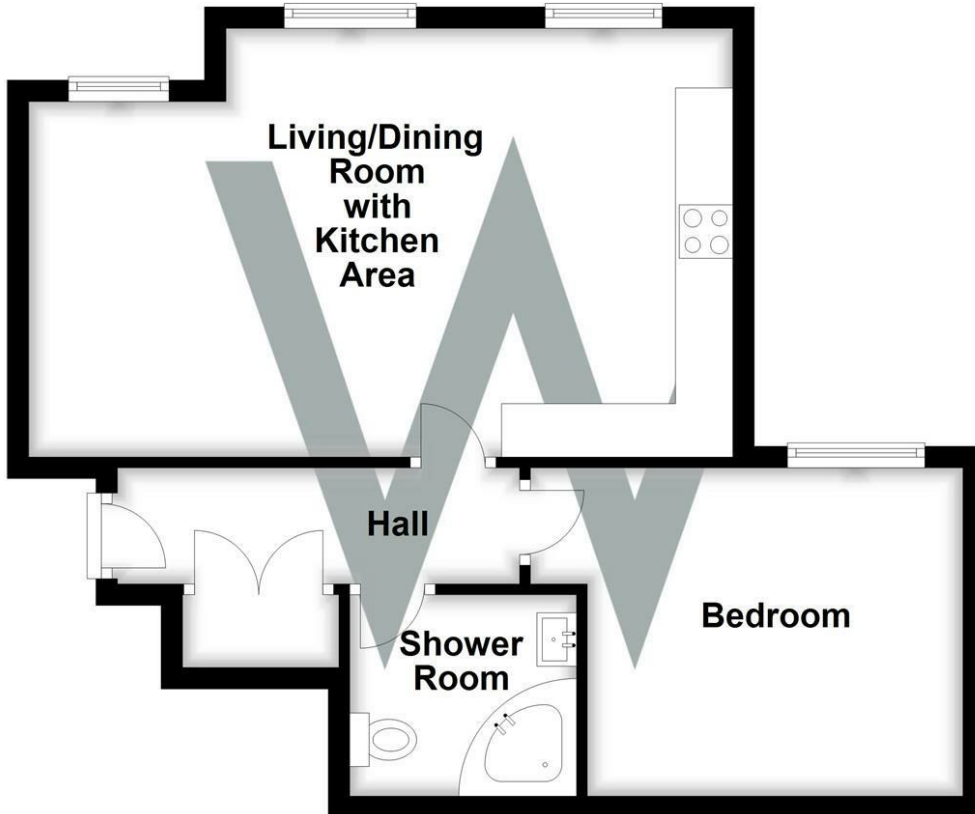
VIEWINGS ON HOLD DUE TO HIGH DEMAND

- MODERN FIRST FLOOR FLAT
- ONE BEDROOM
- OPEN PLAN LIVING ARE WITH KITCHEN
- SHOWER ROOM
- PVCu DG
- GAS CH
- ALLOCATED PARKING
- NO THROUGH ROAD
- CLOSE TO CITY CENTRE
- NO PETS

**£750**

## Floor Plan

Approx. 46.8 sq. metres (504.2 sq. feet)



Total area: approx. 46.8 sq. metres (504.2 sq. feet)

### WHITES

Castle Chambers, 47 Castle Street, Salisbury,  
Wiltshire, SP1 3SP

Tel: 01722 336422/Option 2

www.hwwhite.co.uk

email: lettings-management@hwwhites.co.uk

Energy Efficiency Rating		Current	Potential
Very energy efficient - lower running costs			
(92 plus) <b>A</b>			
(81-91) <b>B</b>		<b>83</b>	<b>83</b>
(69-80) <b>C</b>			
(55-68) <b>D</b>			
(39-54) <b>E</b>			
(21-38) <b>F</b>			
(1-20) <b>G</b>			
Not energy efficient - higher running costs			
<b>England &amp; Wales</b>		EU Directive 2002/91/EC	

Environmental Impact (CO <sub>2</sub> ) Rating		Current	Potential
Very environmentally friendly - lower CO <sub>2</sub> emissions			
(92 plus) <b>A</b>			
(81-91) <b>B</b>			
(69-80) <b>C</b>			
(55-68) <b>D</b>			
(39-54) <b>E</b>			
(21-38) <b>F</b>			
(1-20) <b>G</b>			
Not environmentally friendly - higher CO <sub>2</sub> emissions			
<b>England &amp; Wales</b>		EU Directive 2002/91/EC	